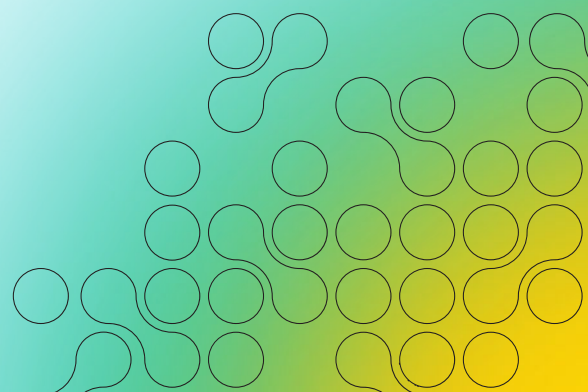


Volpara® Risk Pathways

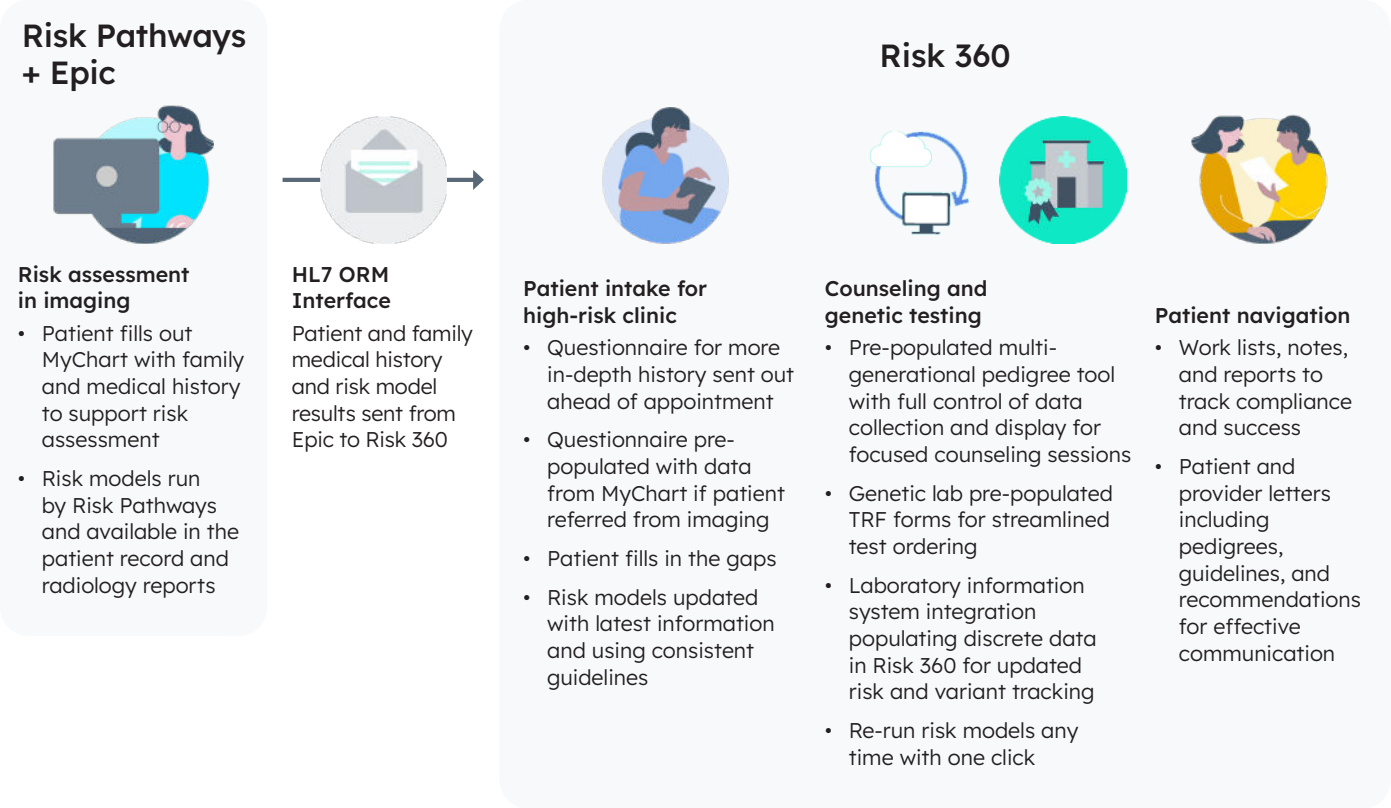
Add Risk 360 to your Epic ecosystem



Volpara® Risk 360™ is a cloud-based application for healthcare providers using the Volpara® Risk Pathways® integration with Epic.® Risk 360's additional tools meet the needs of genetic counselors and other high-risk professionals who want more control over how they conduct family histories, generate pedigrees, and order genetic tests.

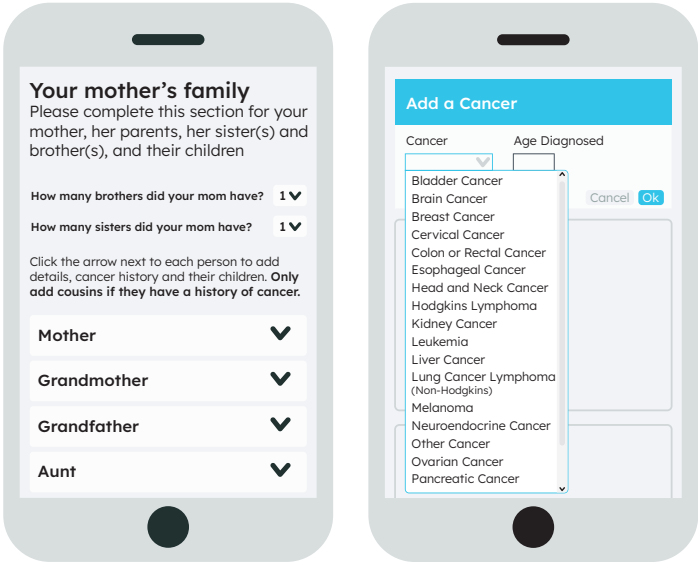


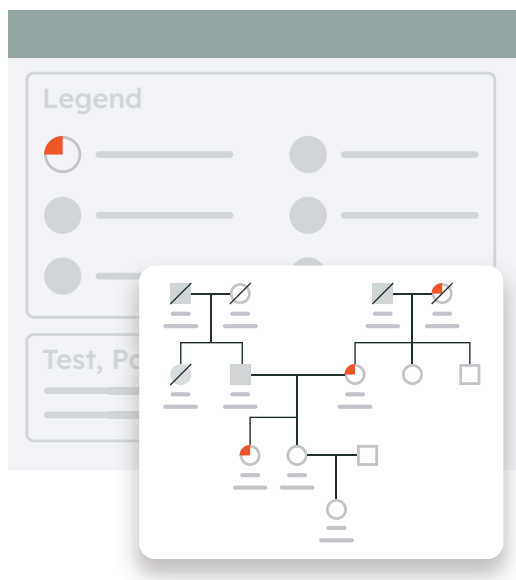
With Risk Pathways fully embedded in your Epic ecosystem and handling your imaging workflow, Risk 360 takes on the workflow of your high-risk clinic.



From patient intake to counseling and genetic testing to patient navigation, Risk 360 enhances the way your high-risk clinic works:

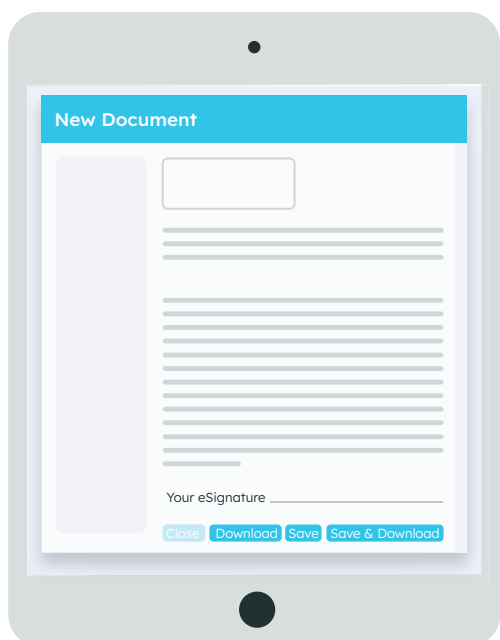
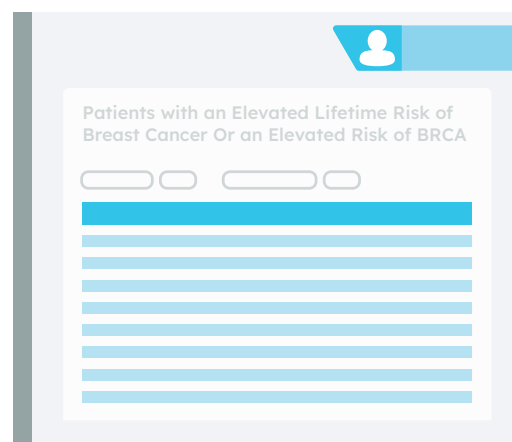
An **online questionnaire** allows you to gather patient history prior to an appointment. It's pre-populated if the patient has been referred from the imaging department.





The **multi-generational pedigree** tool helps genetic professionals dive deeper into hereditary cancer risk and cascade testing. It's pre-populated with data from imaging but can easily be updated with more detailed family history. Genetic counselors can customize pedigrees to meet the needs of each patient and have full control of how data is collected and displayed, enabling focused counseling sessions.

Worklists, notes, and reports help you keep on top of patient adherence and success.



Patient and provider letters include pedigrees, recommendations, and NCCN Guidelines for Genetic/Familial High-Risk Assessment: Breast, Ovarian, and Pancreatic (NCCN Guidelines®).



Lab Connect offers pre-populated genetic lab test request forms (TRFs) and Lab Information Management System (LIMS) integrations for return results, reducing manual paperwork and data entry. These give both patients and their genetic counselors the clear, accurate information they need when discussing a given care path.

Note: Risk Pathways with Risk 360 is not bidirectional. Risk 360 is pre-populated with data from Epic for streamlined data collection, but data does not automatically flow from Risk 360 back to Epic.

Minimum requirements

- Risk Pathways software
- HL7 ORM interface to send patient information from the Risk Pathways-Epic integration to Risk 360
- HL7 Scheduling interface if using the Online Questionnaire ahead of the clinic visit
- On-premise server to host the following components:
 - Risk Pathways Inbound Service for sending data from your systems to Risk 360
 - Risk Pathways LDAP Service for end-user authentication integrated with your organization's Active Directory

Hardware requirements

The on-premise server can be a virtual machine or a physical server, in either case with the following:

- 2 CPUs
- 8 GB of memory
- 20 GB of free hard drive space after installing the OS and other applications
- Gigabit network interface

Software requirements

The on-premise server should have the following:

- Windows Server 2016 or later
- NET Framework 4.6.1 or later

Copyright © Lunit International Ltd. 2025. All rights reserved. Third-party trademarks are the property of their respective owners. Epic and MyChart are trademarks of Epic Systems Corporation. NCCN makes no warranties of any kind whatsoever regarding their content, use or application and disclaims any responsibility for their application or use in any way.

Lunit, Inc. owns, uses or enforces the following trademarks of service marks: Lunit, Lunit INSIGHT MMG, and Lunit INSIGHT DBT. The products described are CE certified in accordance with applicable EU standards and regulations. The product fulfills the requirements for CE certification. 5F, 374 Gangnam-daero, Gangnam-gu, Seoul, 06241, Republic of Korea
mtk8409-2